

Hook-type latches

lockable / not lockable

SPECIFICATION

Lockable

Types

- Type **SC**: Operation with key (same lock)
- Type **SU**: Operation with key (different lock)
- Type **SCK**: Operation with wing knob (same lock)
- Type **SUK**: Operation with wing knob (different lock)
- Type **SCT**: Operation with T-Handle (same lock)
- Type **SUT**: Operation with T-Handle (different lock)

Version of the hook

Version **H1**: Pivot radius R=28

Identification no.

- No. **1**: without latch bracket
- No. **2**: with latch bracket

Lock housing
Zinc die casting

Locating ring

- chrome plated **CR**
- plastic coated, black, RAL 9005, textured finish **SW**

All other parts

Steel zinc plated, blue passivated

Key

Nickel silver with plastic hand piece

Wing knob / T-Handle

Plastic (Polyamide PA)
black, matt

Operation with socket key, not lockable

Types

- Type **DK**: Operation with triangular spindle (DK7)
- Type **VK7**: Operation with square spindle A/F7
- Type **VK8**: Operation with square spindle A/F8
- Type **SCH**: Operation with slot
- Type **VDE**: Operation with double bit

Version of the hook

Version **H1**: Pivot radius R=28

Identification no.

- No. **1**: without latch bracket
- No. **2**: with latch bracket

Lock housing
Zinc die casting

Locating ring

- chrome plated **CR**
- plastic coated, black, RAL 9005, textured finish **SW**

All other parts

Steel zinc plated, blue passivated

INFORMATION

Hook-type latches GN 115.8 with hook and latch bracket are mainly used for sliding doors and flaps. The locking action is in radial direction to the axis of rotation, resulting in a wide variety of different uses.

The types with a different lock are available in more than 200 variants, whose key is marked by numbers.

The scope of delivery includes a separately enclosed hook as well as two keys removable in both end positions.



Operation with operating elements, not lockable

Types

- Type **SG**: Operation with star knob
- Type **SK**: Operation with wing knob
- Type **ST**: Operation with T-Handle
- Type **RG**: Operation with knurled knob GN 7336 (see page 280)
- Type **KG**: Operation with wing knob
- Type **HG**: Operation with lever

Version of the hook

- Version **H1**: Pivot radius R=28

Identification no.

- No. **1**: without latch bracket
- No. **2**: with latch bracket

Lock housing
Zinc die casting

Locating ring

- chrome plated **CR**
- plastic coated, black, RAL 9005, textured finish **SW**

All other parts

Steel zinc plated, blue passivated

Operating elements
Plastic (Polyamide PA)
black, matt

Cover cap (type RG, KG, HG)
light grey

TECHNICAL INFORMATION

- List of latch types (see page 1456)
- Plastic characteristics (see page A2)

ACCESSORY

- Socket keys GN 119.2 (see page 1530)
- Protective caps GN 120 (see page 1486)
- Opening handles GN 120.1 (see page 1487)

ON REQUEST

- Hook-type latches with other hook distance A
- Hook with other pivoting radius R



CONSTRUCTION AND ASSEMBLY INSTRUCTIONS

The bolt diameter may be shifted by 10 mm, making it easier to adapt the locking mechanism to the installation site.

When locked, the bolt is ideally positioned at the level of the axis of rotation as shown. A sideways offset of as much as 4 mm does not impair the proper function.

The angle of rotation of the **hook** is normally limited to 90°. Depending on the mounting of the contact pin supplied loose, the locking action is effected by turning left or right. Without the contact pin, the hook can be rotated by 360°.

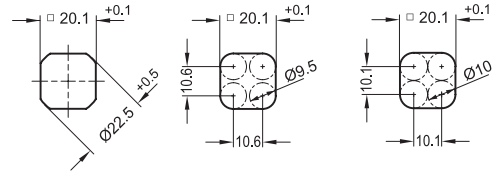
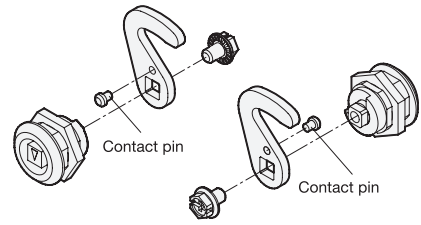
For installation, set a bore diameter in the door as shown in the outline drawing.

Before mounting the hook, the locking mechanism must first be mounted in the door leaf (using the enclosed hexagonal nut).

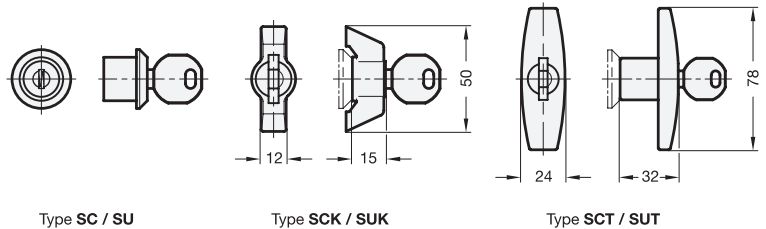
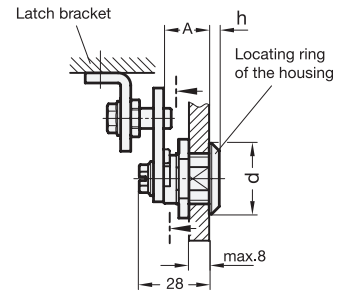
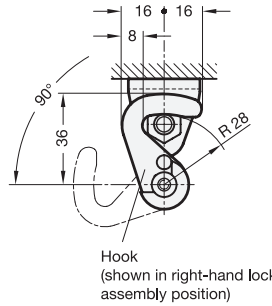
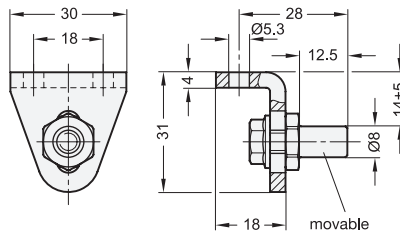
The **installation bore diameter** in the door leaf is usually generated by punching or laser machining in series production.

For small series and steel sheets below 2 mm thickness, the sheet metal punches GN 123 (see page 1493) are the tool of choice.

The installation bore diameter can also be set by drilling / milling as shown in the outline drawings.



Dimensions of the latch bracket

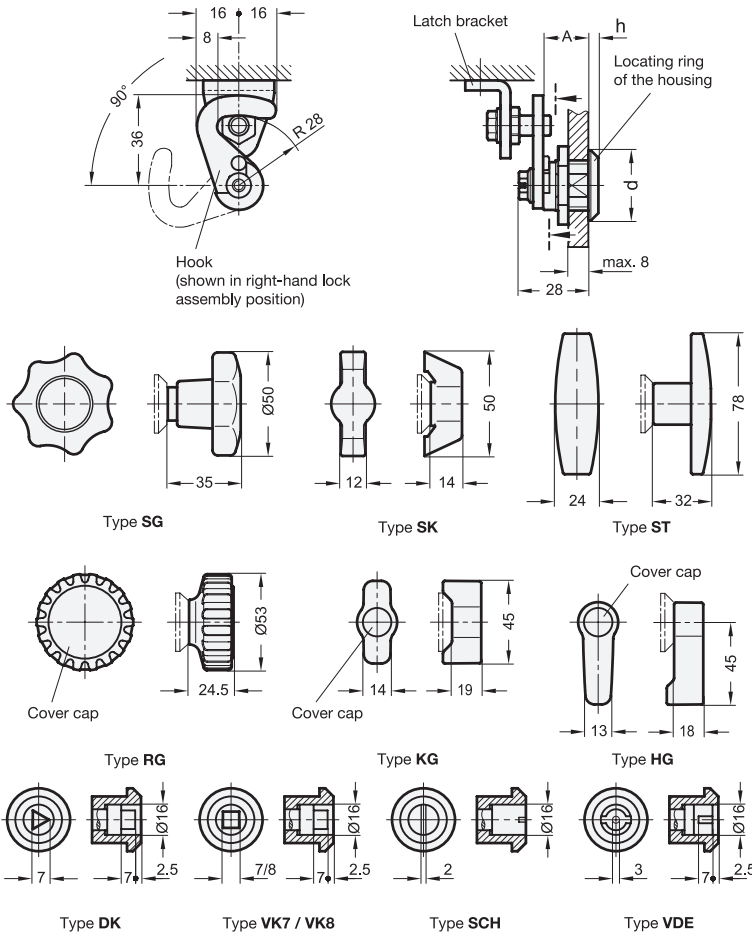


GN 115.8 - Lockable

Description	Hook distance A	d	h	⚖️
GN 115.8-SC-18-H1-CR-1	18	28	4	94
GN 115.8-SC-18-H1-CR-2	18	28	4	140
GN 115.8-SC-18-H1-SW-1	18	28	4	100
GN 115.8-SC-18-H1-SW-2	18	28	4	120
GN 115.8-SCK-18-H1-CR-1	18	32	6	100
GN 115.8-SCK-18-H1-CR-2	18	32	6	124
GN 115.8-SCK-18-H1-SW-1	18	32	6	128
GN 115.8-SCK-18-H1-SW-2	18	32	6	150
GN 115.8-SCT-18-H1-CR-1	18	32	6	166
GN 115.8-SCT-18-H1-CR-2	18	32	6	206
GN 115.8-SCT-18-H1-SW-1	18	32	6	161
GN 115.8-SCT-18-H1-SW-2	18	32	6	201

GN 115.8 - Lockable

Description	Hook distance A	d	h	⚖️
GN 115.8-SU-18-H1-CR-1	18	28	4	84
GN 115.8-SU-18-H1-CR-2	18	28	4	124
GN 115.8-SU-18-H1-SW-1	18	28	4	84
GN 115.8-SU-18-H1-SW-2	18	28	4	124
GN 115.8-SUK-18-H1-CR-1	18	32	6	124
GN 115.8-SUK-18-H1-CR-2	18	32	6	168
GN 115.8-SUK-18-H1-SW-1	18	32	6	128
GN 115.8-SUK-18-H1-SW-2	18	32	6	168
GN 115.8-SUT-18-H1-CR-1	18	32	6	128
GN 115.8-SUT-18-H1-CR-2	18	32	6	168
GN 115.8-SUT-18-H1-SW-1	18	32	6	128
GN 115.8-SUT-18-H1-SW-2	18	32	6	168



GN 115.8 - Operation with operating elements, not lockable

Description	Hook distance A	d	h	△
GN 115.8-HG-18-H1-CR-1	18	28	4	87
GN 115.8-HG-18-H1-CR-2	18	28	4	128
GN 115.8-HG-18-H1-SW-1	18	28	4	87
GN 115.8-HG-18-H1-SW-2	18	28	4	130
GN 115.8-KG-18-H1-CR-1	18	28	4	85
GN 115.8-KG-18-H1-CR-2	18	28	4	126
GN 115.8-KG-18-H1-SW-1	18	28	4	85
GN 115.8-KG-18-H1-SW-2	18	28	4	125
GN 115.8-RG-18-H1-CR-1	18	28	4	109
GN 115.8-RG-18-H1-CR-2	18	28	4	149
GN 115.8-RG-18-H1-SW-1	18	28	4	108
GN 115.8-RG-18-H1-SW-2	18	28	4	148
GN 115.8-SG-18-H1-CR-1	18	28	4	111
GN 115.8-SG-18-H1-CR-2	18	28	4	140
GN 115.8-SG-18-H1-SW-1	18	28	4	110
GN 115.8-SG-18-H1-SW-2	18	28	4	140
GN 115.8-SK-18-H1-CR-1	18	32	6	100
GN 115.8-SK-18-H1-CR-2	18	32	6	140
GN 115.8-SK-18-H1-SW-1	18	32	6	100
GN 115.8-SK-18-H1-SW-2	18	32	6	140
GN 115.8-ST-18-H1-CR-1	18	32	6	134
GN 115.8-ST-18-H1-CR-2	18	32	6	174
GN 115.8-ST-18-H1-SW-1	18	32	6	131
GN 115.8-ST-18-H1-SW-2	18	32	6	171

GN 115.8 - Operation with socket key, not lockable

Description	Hook distance A	d	h	△
GN 115.8-DK-18-H1-CR-1	18	28	4	72
GN 115.8-DK-18-H1-CR-2	18	28	4	112
GN 115.8-DK-18-H1-SW-1	18	28	4	71
GN 115.8-DK-18-H1-SW-2	18	28	4	111
GN 115.8-SCH-18-H1-CR-1	18	28	4	78
GN 115.8-SCH-18-H1-CR-2	18	28	4	119
GN 115.8-SCH-18-H1-SW-1	18	28	4	79
GN 115.8-SCH-18-H1-SW-2	18	28	4	119
GN 115.8-VDE-18-H1-CR-1	18	28	4	74
GN 115.8-VDE-18-H1-CR-2	18	28	4	100
GN 115.8-VDE-18-H1-SW-1	18	28	4	75
GN 115.8-VDE-18-H1-SW-2	18	28	4	100
GN 115.8-VK7-18-H1-CR-1	18	28	4	72
GN 115.8-VK7-18-H1-CR-2	18	28	4	120
GN 115.8-VK7-18-H1-SW-1	18	28	4	73
GN 115.8-VK7-18-H1-SW-2	18	28	4	113
GN 115.8-VK8-18-H1-CR-1	18	28	4	73
GN 115.8-VK8-18-H1-CR-2	18	28	4	117
GN 115.8-VK8-18-H1-SW-1	18	28	4	73
GN 115.8-VK8-18-H1-SW-2	18	28	4	113

